

QUALICUM BEACH SKATEPARK REDEVELOPMENT

DESIGN PROGRESS



TOWN OF QUALICUM BEACH
Incorporated 1942



NEWLINE
SKATEPARKS
BUILDING SKATEBOARDING

TONIGHT'S PRESENTATION

- Welcome & Introductions
- Project Progress
- Skatepark Considerations
- Design Walkthrough
- Discussion and Next Steps



WHAT IS THIS PROJECT ALL ABOUT?

The Town of Qualicum Beach is considering an extensive redevelopment of the existing skatepark. This will include **creating a new highly integrated modern all-wheel skatepark and other complimentary site improvements.**

The **site** will consist of the existing skatepark footprint and surrounding grounds

The new skatepark is intended to provide **positive socializing and casual recreation opportunities for Qualicum Beach youth, families and visitors from across the region.**



SKATEPARK

REDEVELOPMENT JOURNEY...

Phase 1: Feasibility and Preliminary Concept Design

- Intro / design workshop 1
- Presentation of Initial Schematic Design Options
- **Preferred Preliminary Design Direction and Budget**

Phase 2: Detailed Design

- Refine concept
- Budget planning
- Working drawings

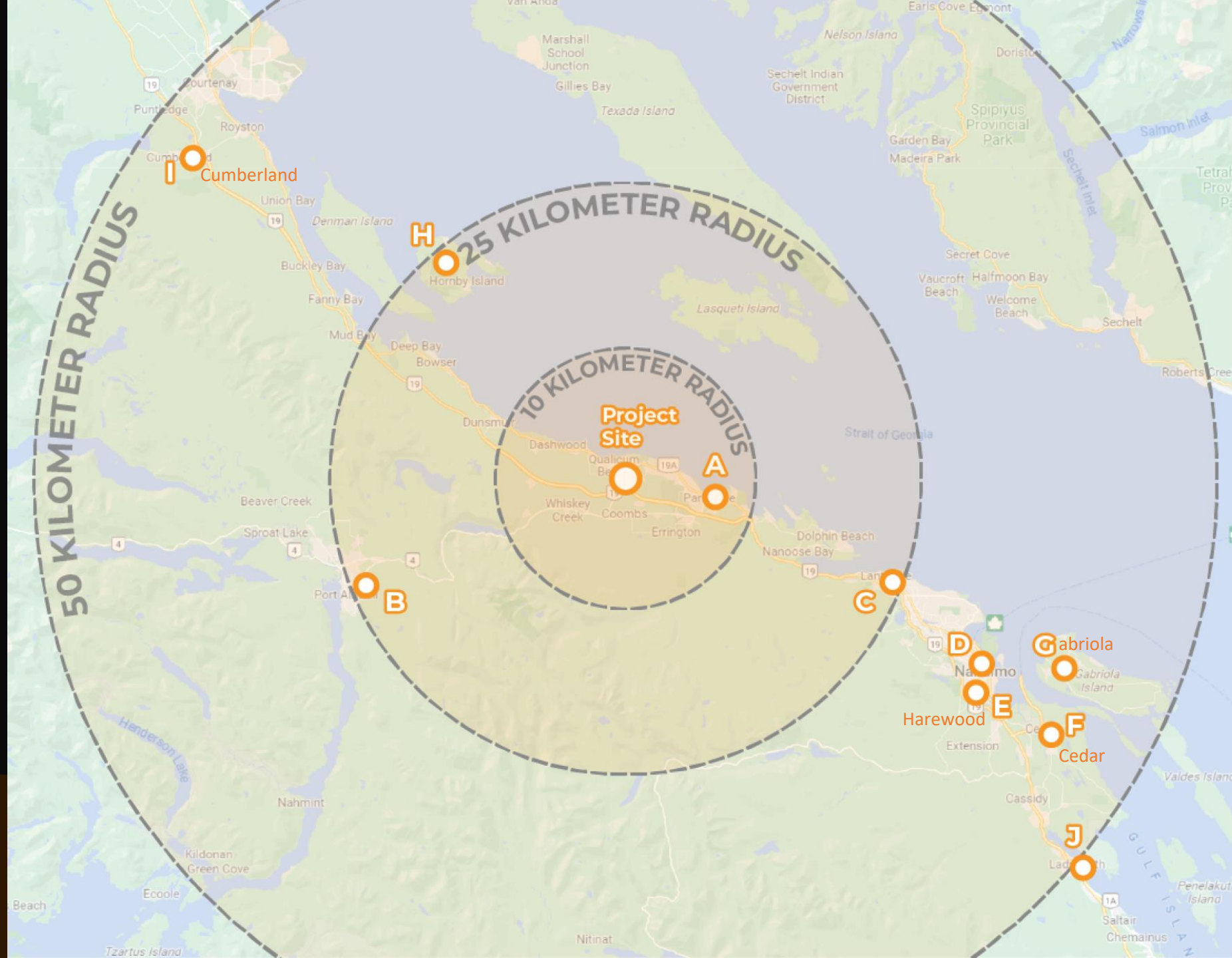
Phase 3: Construction

- Mobilize
- Build
- Certify

Phase 4: Ride the park

- Ollie
- Grind
- Enjoy





- A** PARKSVILLE SKATEPARK
PARKSVILLE, BC
- B** PORT ALBERNI SKATEPARK
PORT ALBERNI, BC
- C** ROTARY SKATEPARK
LANTZVILLE, BC
- D** BOWEN PARK SKATEPARK
NANAIMO, BC
- E** HAREWOOD SKATE PARK
NANAIMO, BC
- F** CEDAR SKATEBOARD PARK
NANAIMO, BC
- G** HUXLEY COMMUNITY PARK
GABRIOLA ISLAND, BC
- H** HORNBY ISLAND SKATEPARK
HORNBY ISLAND, BC
- I** CUMBERLAND SKATEPARK
CUMBERLAND, BC
- J** LADYSMITH SKATEPARK
LADYSMITH, BC



SITE PARAMETERS OPPORTUNITIES AND CHALLENGES



OPPORTUNITIES

- *Open up views through the trees from the parking lot.*
- *Integrate with the ball field and improve public access from the lower and upper parking lots. Provide improved connections along the site's desire line trails.*
- *Improve the fit of the skatepark in the site by removing the earth berm and walls.*

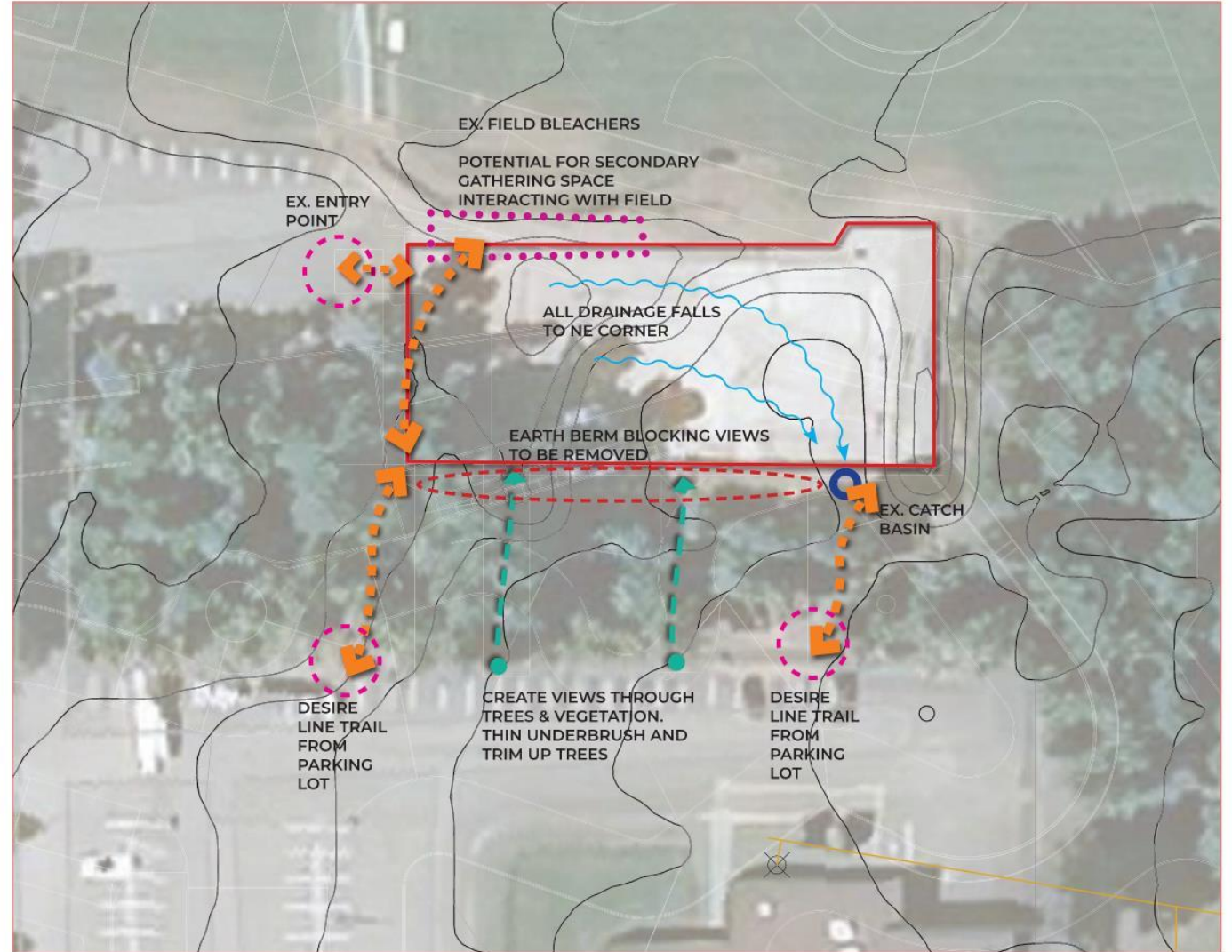
CONSTRAINTS

- *Drainage depth limited by the existing catch basin and drainage to the ditch North of the skatepark.*
- *Work with the mature healthy trees to be protected in the site.*
- *Working with the site's existing grades and topography.*
- *Assuming the soils below the existing skatepark are suitable for building on.*



QUALICUM BEACH SKATEPARK REDEVELOPMENT

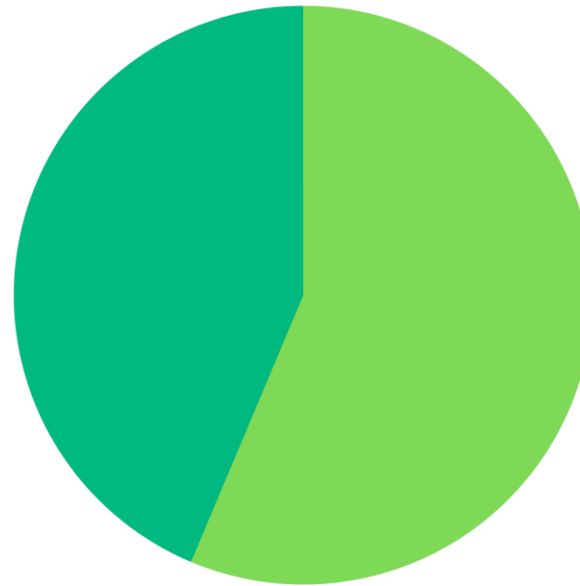
SITE ANALYSIS





WHAT WE HEARD

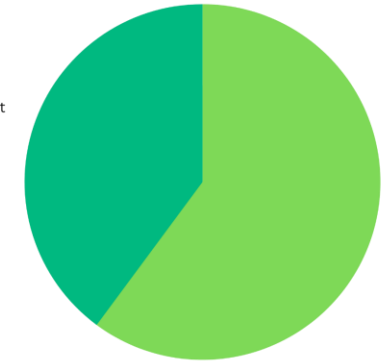
Street/Plaza
43.7%



PREFERRED TERRAIN
142 RESPONSES

Bowl/Transition
56.3%

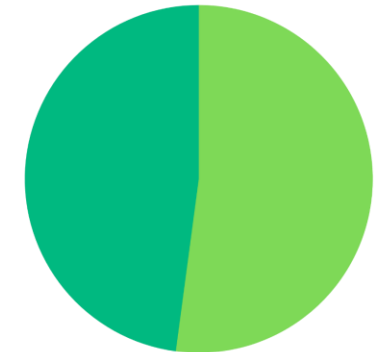
Technical Street
39.9%



PREFERRED STYLE OF STREET
143 RESPONSES

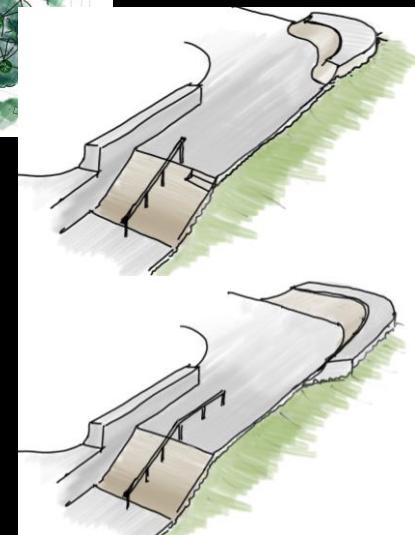
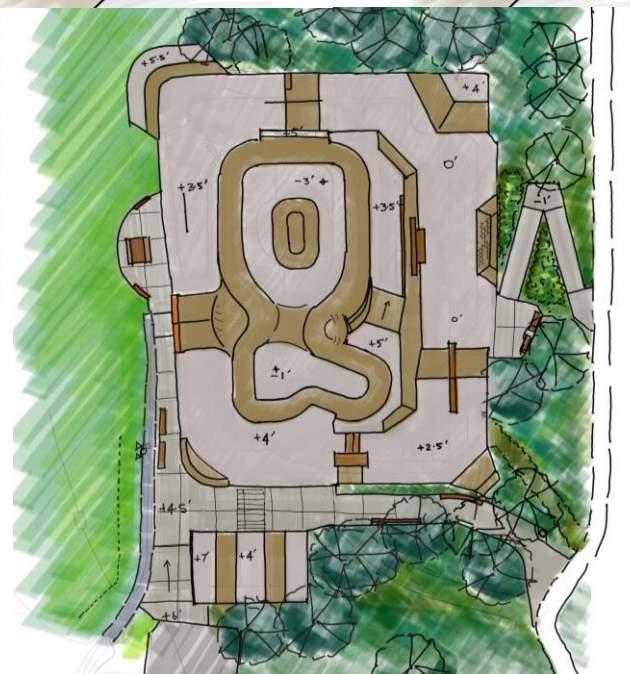
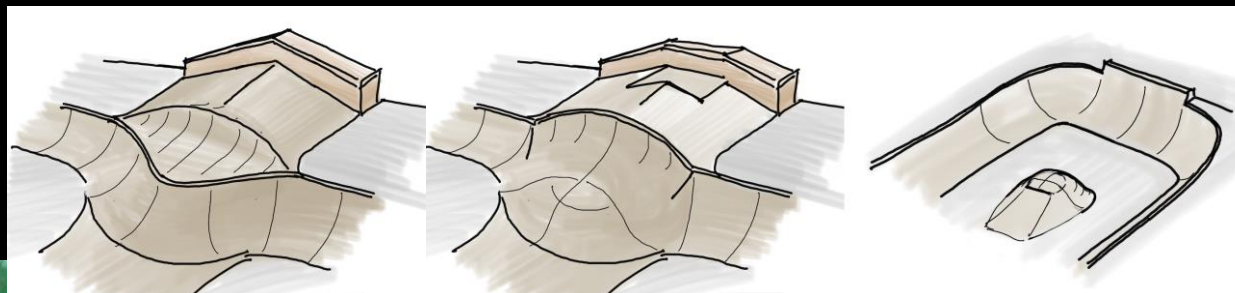
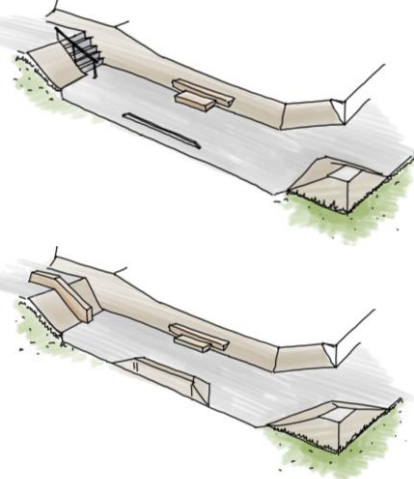
Flowing Street
60.1%

Organic Flow
47.9%



PREFERRED STYLE OF TRANSITION
142 RESPONSES

Mini Ramp/Halfpipe
52.1%



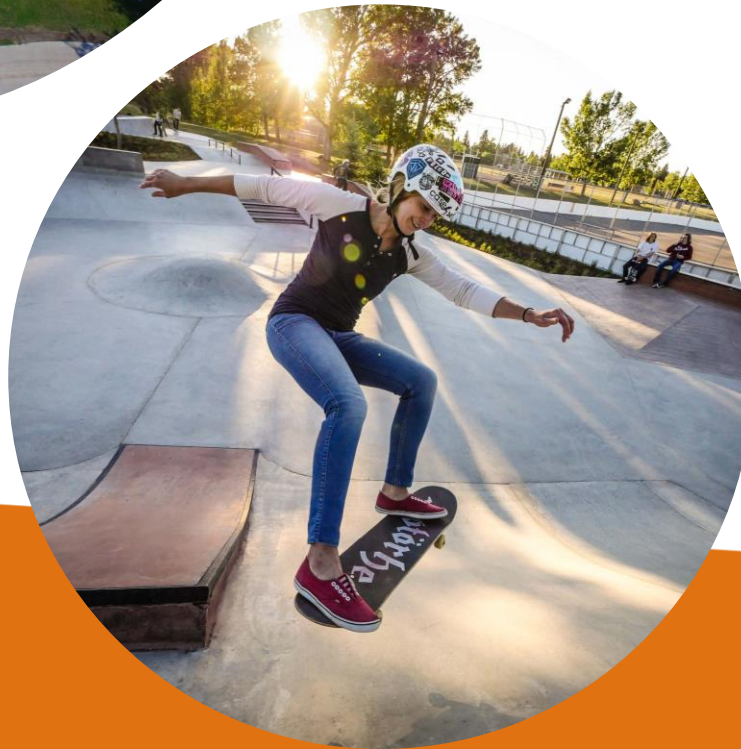
CONCEPT OPTIONS



SKATEPARK DESIGN

Developed selected concept in conjunction with Qualicum Beach Skatepark Advocates group

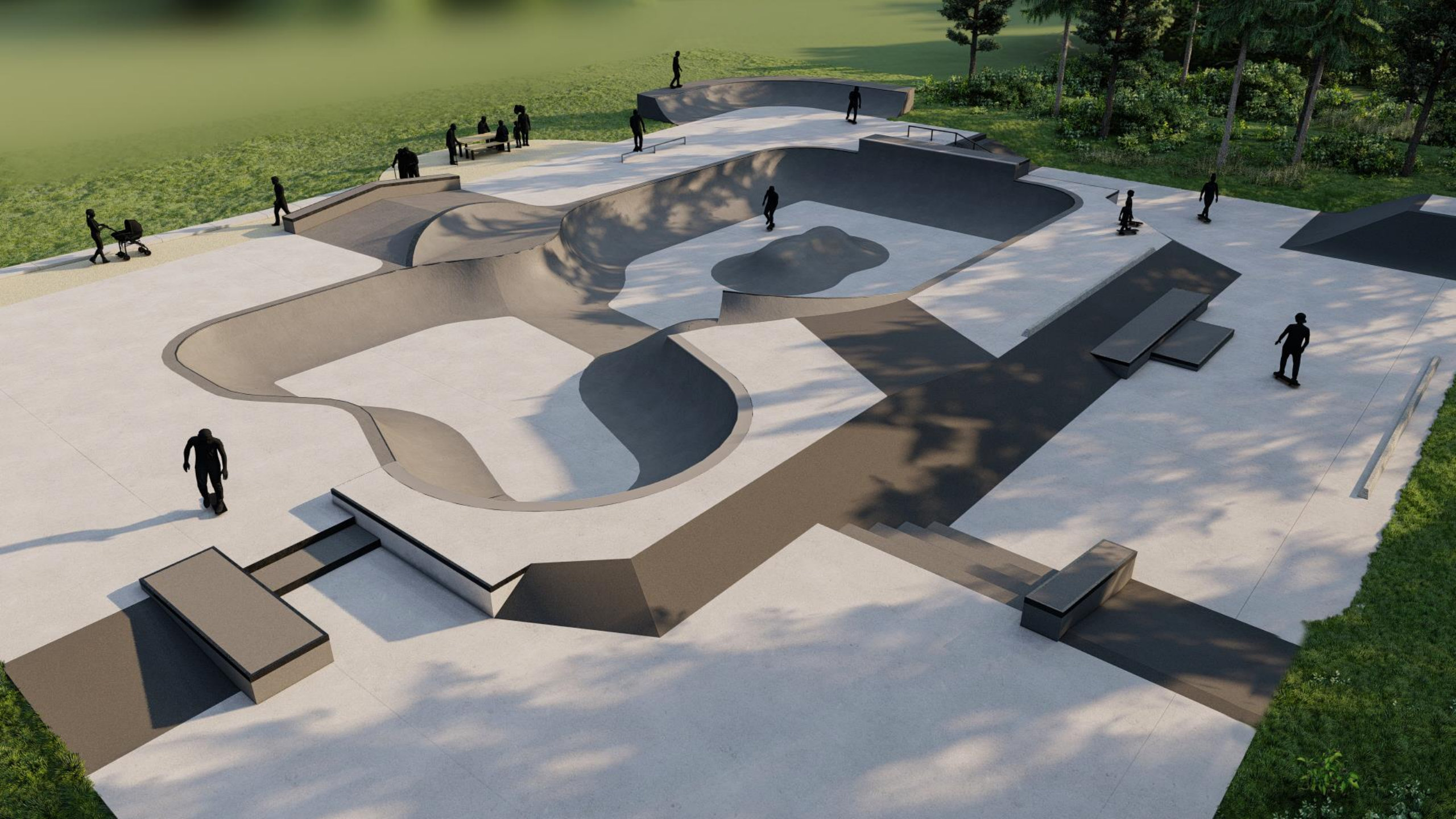
Different mixes of styles and features developed from the options to cater for a variety of skill levels and promote progression









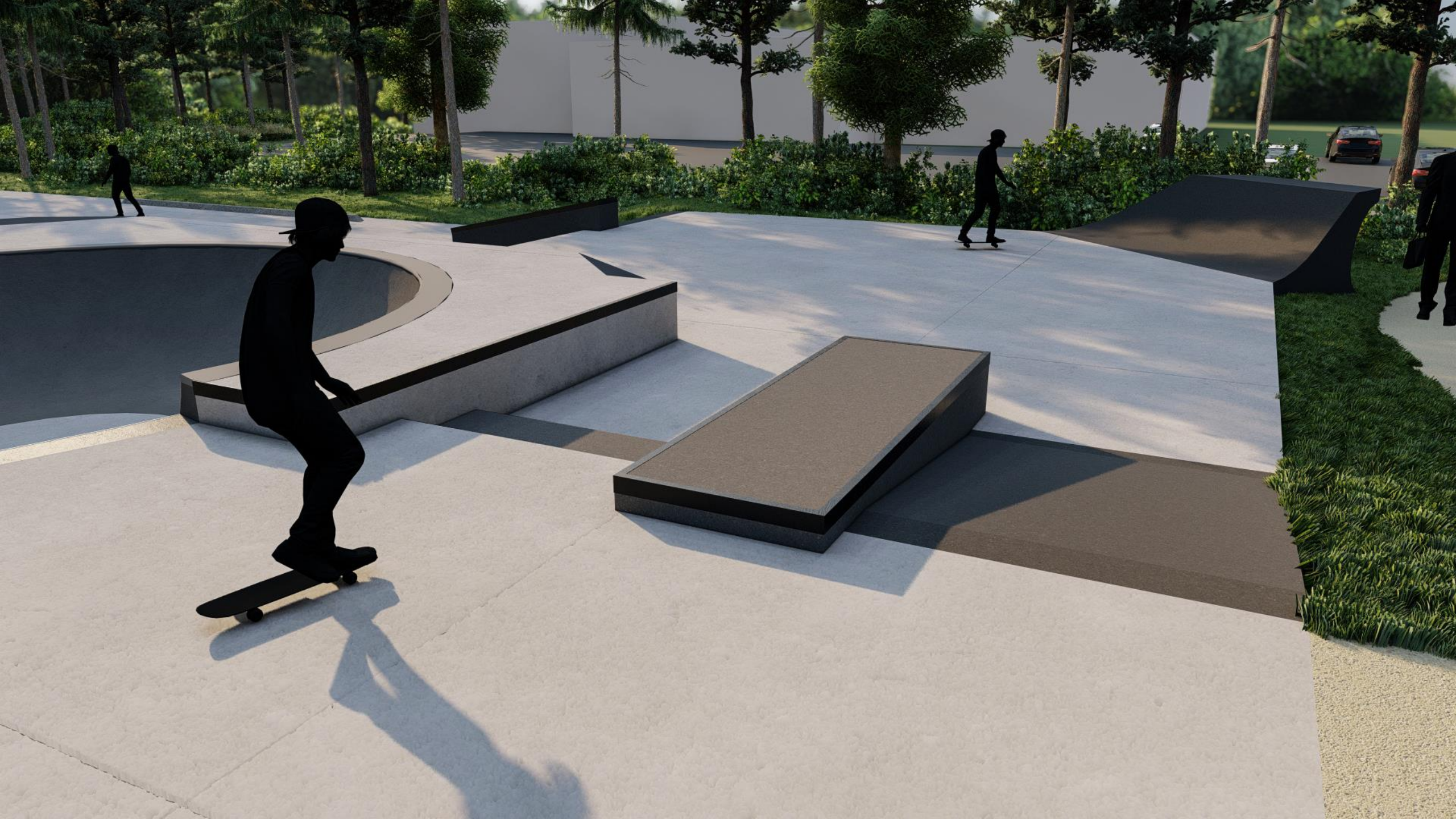




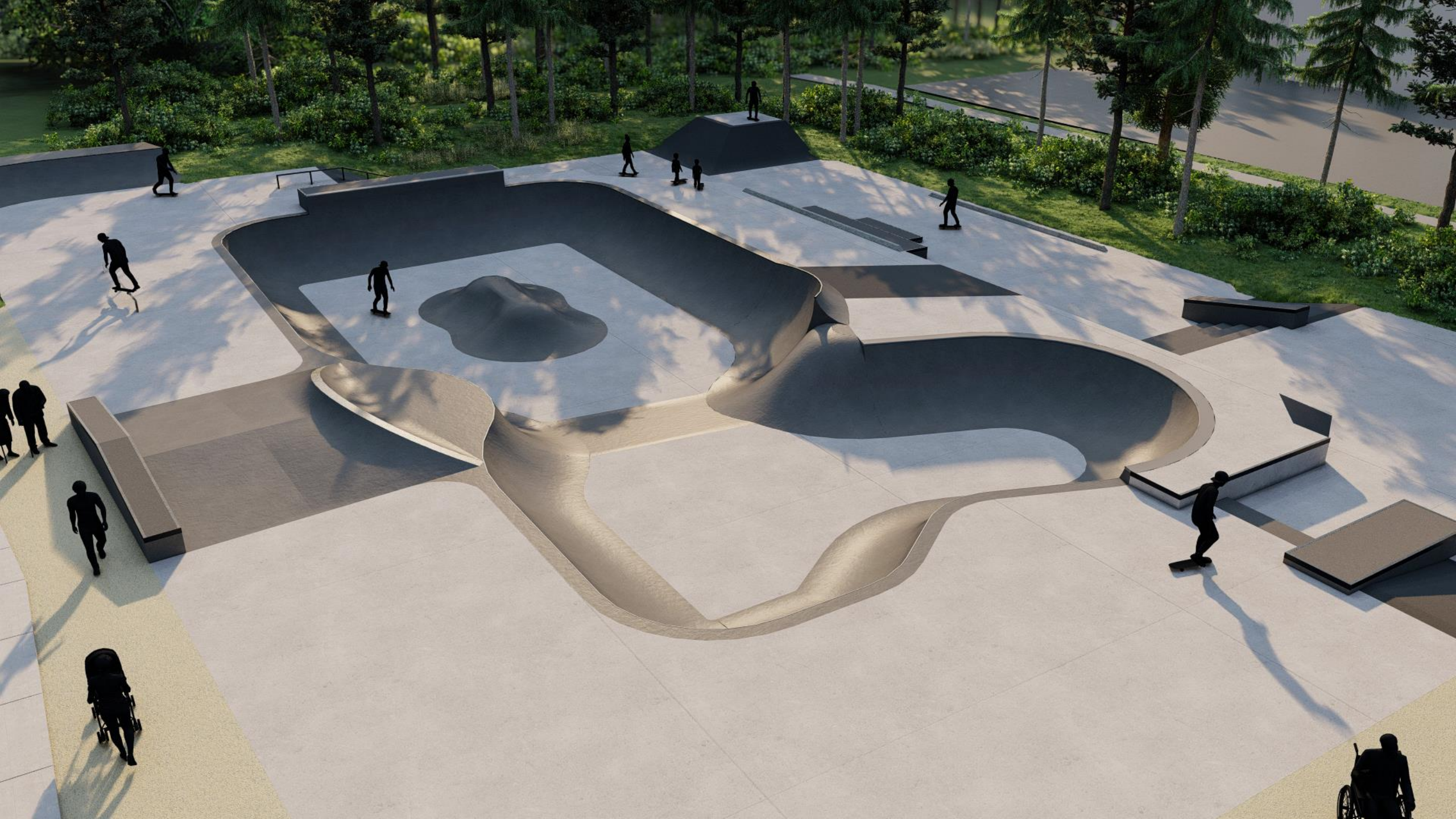


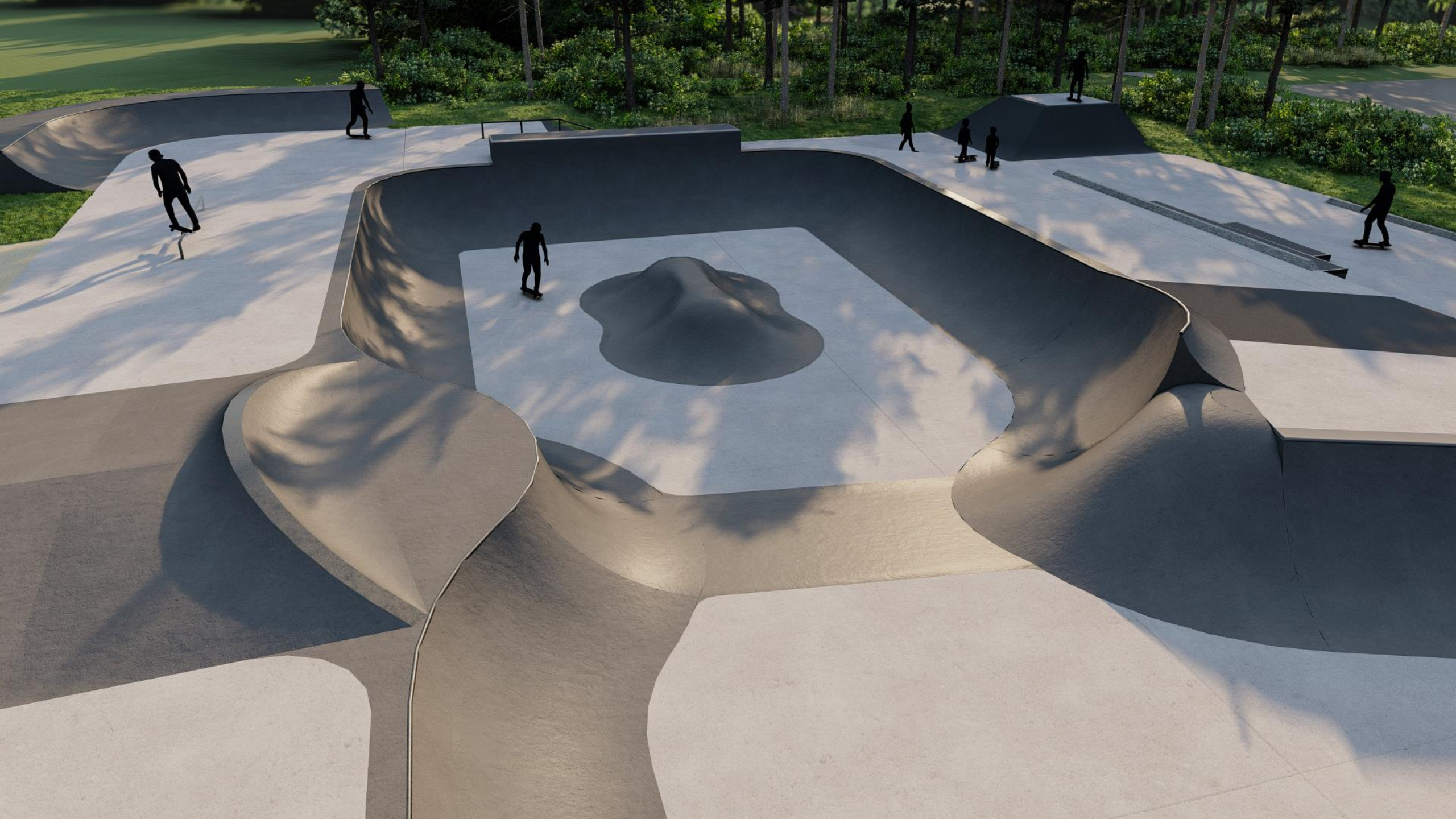












DISCUSSION

